

KD60
Series

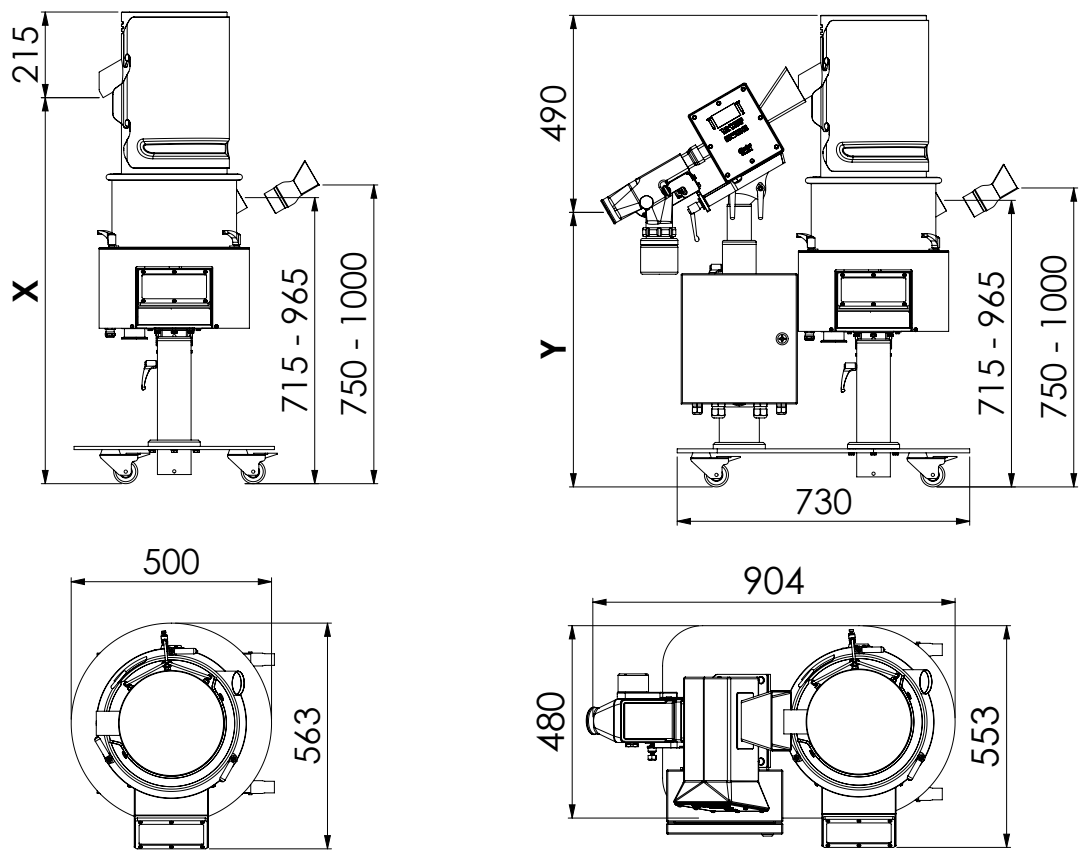
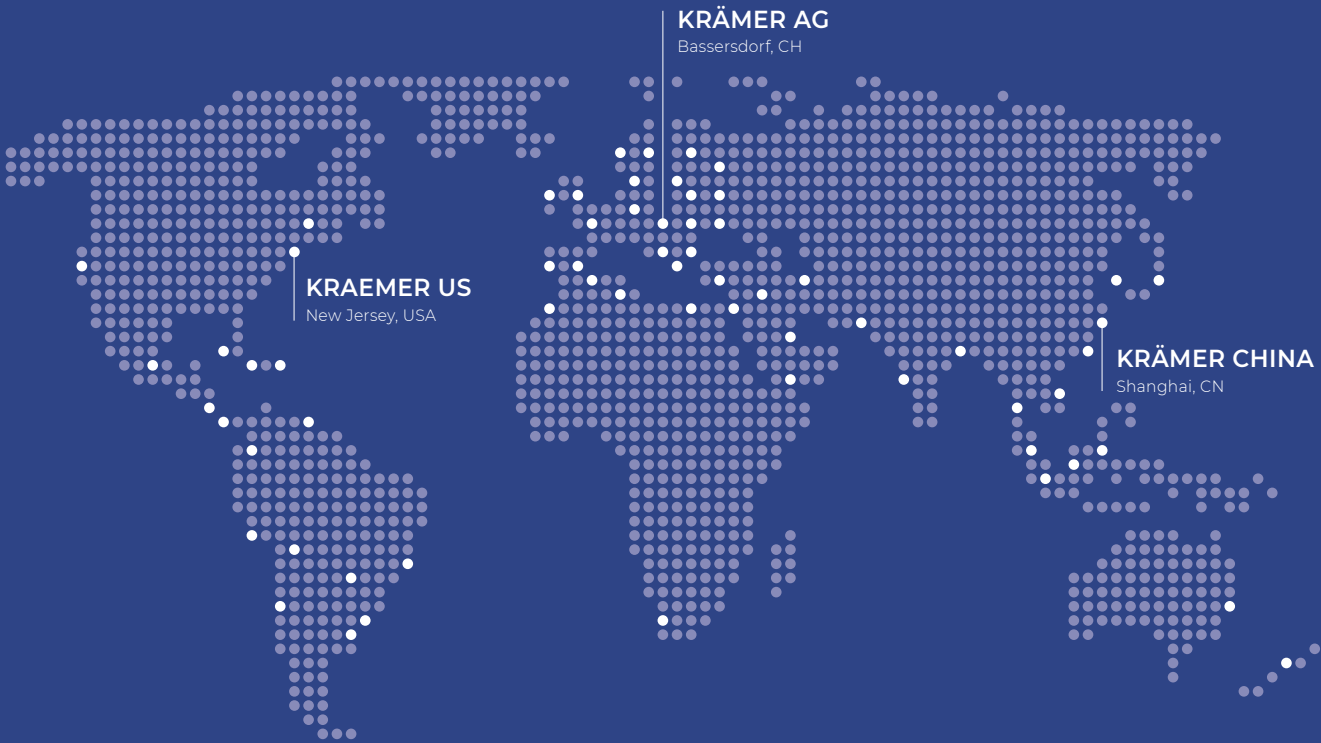


Table with 4 columns: Model (KD6010, KD6015), Weight, Outlet height, and Inlet/Outlet dimensions. KD6010 specs: Weight 75kg, Outlet height 965-1215mm, Inlet/Outlet 60.3/60.3mm, Suction port TC. KD6015 specs: Weight 125kg, Outlet height 690-940mm, Inlet/Outlet 60.3/66mm, Suction port TC.

Table with 2 columns: Conveying Capacity and Technical Data. Conveying Capacity lists round and oblong tablet sizes and capacities (e.g., Round Ø 4.8 x 2.3 mm: 3'500'000 tablets/hr). Technical Data lists power supply (100-240V), maximum current (3A), compressed air (50-100 l/min), air extraction (100-250 m³/h), noise emission (< 68 dB(A)), and protection rating (IP50).

Processable tablet thickness: 2 mm and above (standard version)
Optional: Special version available for thinner tablets

Table with 4 columns: Metal detector type, CEIA EE (100x40), Lock PH IQ4 (95x38), and Safeline Tablex 2L (95x38). Rows include Ferrous (Fe), Non-Ferrous (70Cu30Zn), and Stainless Steel (AISI316) with corresponding detection depths.



KRÄMER, THE SWISS ORIGINAL SINCE 1975

Krämer AG specializes in dedusting, conveying, capsule polishing and handling equipment for the pharmaceutical, nutraceutical and vitamin industries. Since Krämer's invention of the first vertical vibratory tablet deduster more than 45 years ago, the company has developed innovative equipment for customer-specific applications, and produced many industry firsts which have now become standards for every Krämer machine. In cooperation with tablet press, capsule filling and packaging line manufacturers, we have developed machines to address increasingly potent drug products which require dust tight (DT), containment (C), and high containment (HC) for certifiable operator protection. Our KD70DT and WIP Series is SMEPAC certified and meets the required ATEX guidelines. For standard applications we offer our KD60 Series, which also has our patented drive unit and can be equipped with a metal detector from various manufacturers.

More than 10'000 Krämer dedusters and capsule polishers ensure a smooth daily operation in pharmaceutical plants. Multinational to regional manufacturers of tablets and capsules appreciate the quality and reliability of our products.

Krämer AG Switzerland: Grindelstrasse 23, CH-8303 Bassersdorf, Phone +41 44 838 44 66
Kraemer US, LLC: 240 West Crescent Avenue, Allendale, New Jersey 07401, USA, Phone +1 201 962 8200
Krämer AG (Switzerland) China Office: Room 2601, Block D, No. 80 Caobao Rd., Xuhui District, Shanghai 200235, China, Phone +86 138 1841 6666

www.kraemerag.ch



KD60
Series



© EN 07/2023 Krämer AG - Subject to change without notice

EVERYTHING AT A GLANCE

METAL DETECTION



SAFELINE

- Compact combination unit of deduster and metal detector from Ceia, Loma/Lock or Safeline
- All metal detectors offer best in class calibrated detection levels for the detection of ferrous (FE), non-ferrous (NFE) and stainless steel (SS) particles in tablets
- Total electrical integration with the deduster for transmitting metal detector signals to the tablet press

OPERATOR INTERFACE



- The LCD screen allows the operator to turn the machine on and off, and to chose the necessary conveying speed to operate with the tablet press
- The C820 remote operation feature allows for connection and operation through the tablet press controls if so equipped
- The C820 operates with an acceleration sensor in the drive to determine the optimum operating frequency for ease of operation and assures constant vibration, independent of the load or amount of tablets

PROCESS VIEWING



- The KD60 Series features a PETG lift off window for optimal process viewing and ease of access to the helix for easy removal for cleaning
- In addition, dust agitation compressed air nozzles are supplied for the cleanest tablets possible

CONNECTION PORTS



- 2 inch Tri-Clamp vacuum dust collection port for ease of assembly of a dust collection hose
- Various optional hose adaptors are available upon request. In addition, the power supply cable uses a quick connect plug
- The quick connect plug allows for use of preassembled cables with power supply as well as signal wire options for communication to upstream equipment such as tablet presses

INLET



- The tablet inlet can be rotated 360° with no tools, independent of the tablet outlet
- With the use of an optional rectangular tablet inlet 110 x 70 mm and various inlet adapters, the deduster can be easily adapted to the outlet configurations of different tablet presses
- If the adapter is not being used, a hose can directly be attached to the round Ø 60 mm inlet

DRIVE SYSTEM



- The KD60 Series vibratory drive features the Krämer patented counterweight system which allows for operation of the deduster with no vibration being transmitted to up stream or down stream equipment
- Because of the counterweight the machine is extremely quiet, low maintenance and allows for precise vibration control which is extremely gentle on the tablets
- The silicone membrane prevents dust from entering the vibratory drive unit

MAIN FEATURES

- Available in conveying heights of 250, 500 and 750 mm
- Upward conveying of tablets with diameter 3 - 25 mm by means of continuously adjustable vibration
- Designed according to cGMP specifications
- Lowest noise level < 68 dB
- Compact combination of deduster and metal detector for minimal footprint
- Flexible application thanks to 360°

- rotation freedom of tablet inlet and outlet (right or left of tablet press)
- Deduster on telescopic column for flexible adjustment of tablet inlet height
- Improved dedusting and deburring capabilities thanks to optimized combination of vibration, dust agitation air, and vacuum suction
- Vibration-free housing thanks to patented drive unit for trouble-free combination with metal detector

- Featuring an acceleration sensor that assures constant vibration, independent of the load / amount of tablets in the deduster
- The process can be monitored visually at all times through a large window
- Easy assembly and disassembly, no tools are needed
- Easy cleaning

AVAILABLE VERSIONS OF THE KD60 SERIES

KD6010



DEDUSTER

KD6015



DEDUSTER WITH METAL DETECTOR

EASY ASSEMBLY AND DISASSEMBLY

